



Community Facilities & Services

Governmental Structure

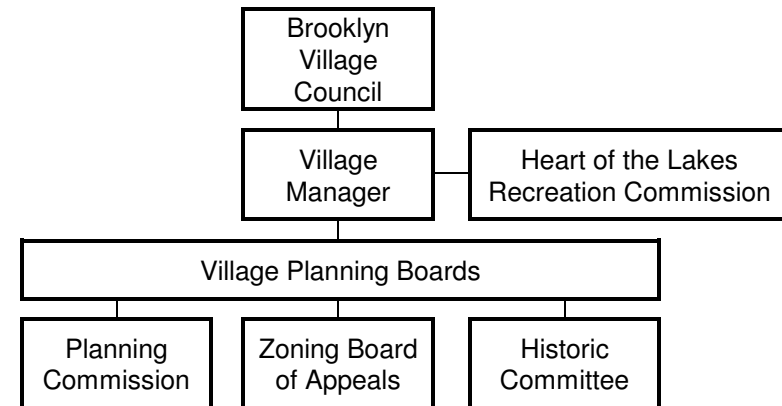
The Village of Brooklyn is appointed and governed by officials that are elected and appointed to the following bodies:

Village Council

Brooklyn's legislative body, the Village Council, is comprised of 6 Trustees as well as a President, Treasurer, and Clerk. The President is elected by the voters (the general electorate) to a 4-year term, as are the Trustees. The Treasurer and Clerk are appointed by the Council. Although they are members of the legislative body, they serve in an ex-officio (non-voting) capacity.

Village Manager

The head administrator of Brooklyn's municipal government is the Village Manager. The Manager is an employee of the Village Council. Currently, the Manager also serves as the Village Clerk, an arrangement that works very well. Village Presidents have also served as the manager.



Planning Bodies

Municipal planning commission and boards have the responsibility of studying land use proposals within the Village and to make recommendations for action to the Village Council.

Planning Commission – The 9-member planning commission is comprised of the Village President; 2 Trustees of the Village appointed by the President; and 6 members appointed at large by the Village Council. The 6 at-large members are appointed for staggered 2-year terms. The Village President and Trustees serve for the remainder of their legislative terms. The Village Manager advises and staffs the Planning Commission.

The Commission is charged with the development of a Comprehensive Plan, as well as zoning, sign and other ordinances (over which the Village Council has final authority), which have their basis in the Comprehensive Plan. The Commission also recommends approval or rejection of requests to the Village Council for district changes (rezonings) and conditional use permits.

Zoning Board of Appeals – The Village Council serves as Brooklyn’s ZBA (Zoning Board of Appeals). The ZBA is charged with reviewing and approving or denying variance requests from the Villages Zoning Ordinance. Interpretation of the Zoning Ordinance is also the responsibility of the ZBA.

Other Municipal Bodies

Other municipal bodies also make recommendations to the Village Council. Several of these bodies sometimes make recommendations that have land use consequences.

Historic Committee – The Village has no Historic District Commission or any recognized historic districts. However, it does have a 3-member Historic committee whose main responsibility is the Stone Church and its exhibits.

Recreation Committee – The Village participates in a Multi-Jurisdictional Recreation Commission in cooperation with the townships of Columbia, Napoleon, and Norvell. Village officials and residents represent Brooklyn on the Heart of the Lake Recreation Commission. The Commission is charged with developing a recreation plan for the region, including a capital improvements program, every five years, and recommending the approval of grant applications to the Village Council.

Downtown Development Authority – The Village established a DDA in 2008 as a means of halting the deterioration within the business district. To date the DDA has generated revenues exclusively through donations since the taxable values within the development area have not increased above the base established in the 2009 Downtown Development and Tax Increment Financing Plan. However, the 7 member board, inclusive of the Village President, has worked diligently to enhance the activities within the downtown while enhancing the climate for those visiting and working within the district through a

variety of economic development initiatives.

Water and Sewer Service

The Village of Brooklyn provides water and sewer service to its residents.

Water System

Brooklyn's water system serves the entire Village (please see Map 7). Village residents are currently served by two wells constructed in 1952 and 1987, one 300,000 gallon water tower and water mains ranging in size from 4 inches to 12 inches in diameter. Additionally, there are 22 private wells serving a variety of residential and commercial structures.

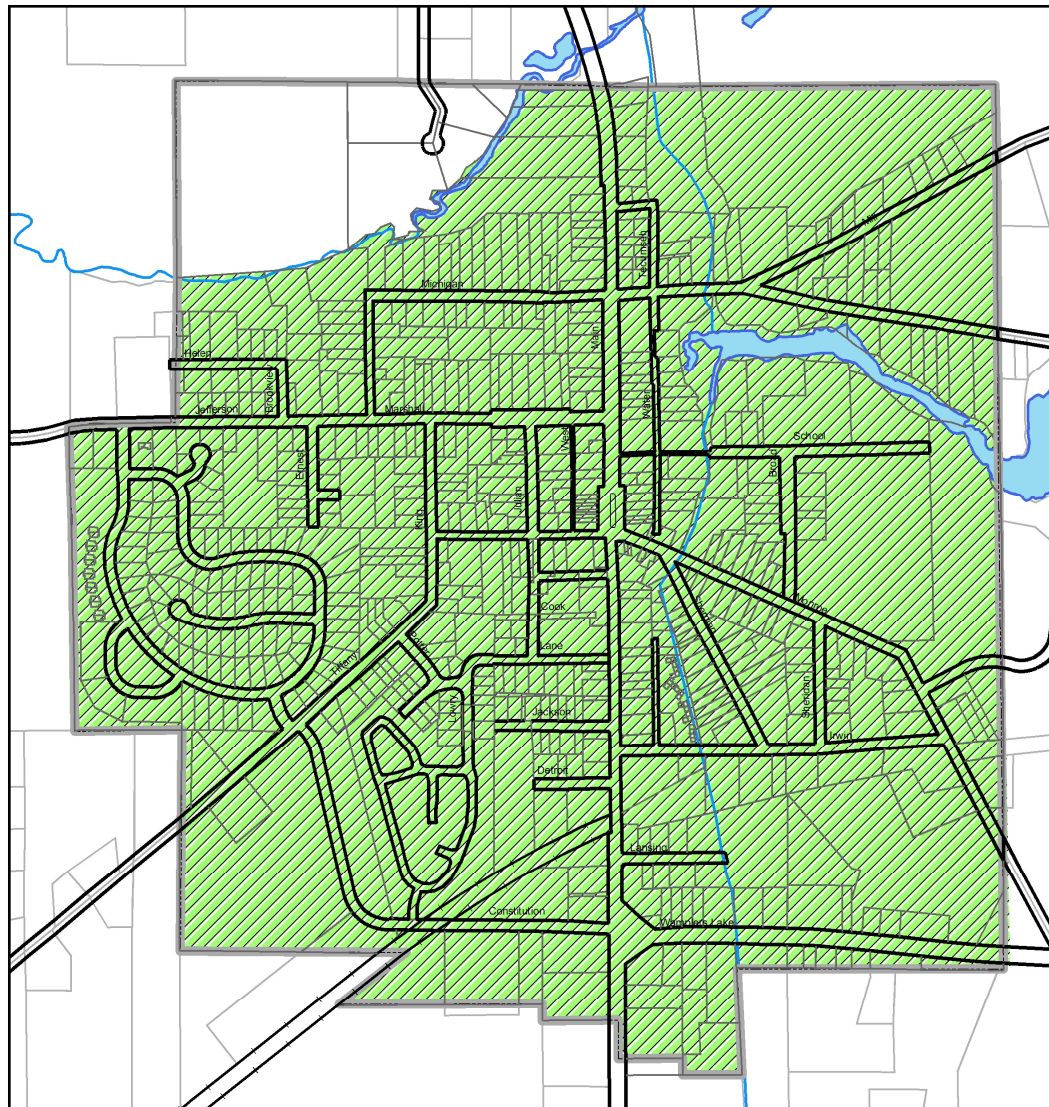
Village Well Capacity			
Well No.	Depth (ft.)	Flow (gpm)	Head Pressure (tdh)
1	50	603	96
2	103	693	48

Demand was determined to be .156 million gallons per day (mgd) for average use and .221 (mgd) maximum daily pumpage in 2011. The number of households increased by 70 units between 2000 and 2010 with new housing units anticipated to continue to be constructed in 2 new subdivisions. Demand will continue to rise.

Sewer System

Brooklyn's sewer system serves the entire Village, exclusive the five (5) parcels within the northwest corner of the Village, and is connected to a sewage treatment plant in Leoni Township via a forced-main located in the Jefferson Road right-of-way (please see Map 8). The treatment facility is operated by a multi-jurisdictional authority. The Village is represented on that authority. Although not designed to accommodate sewer hook-ups, the forced main could be adapted with some difficulty. Columbia Township commercial enterprises along the M-50 corridor south of the Village have access to a separate sewer line.

7. Water Service Area

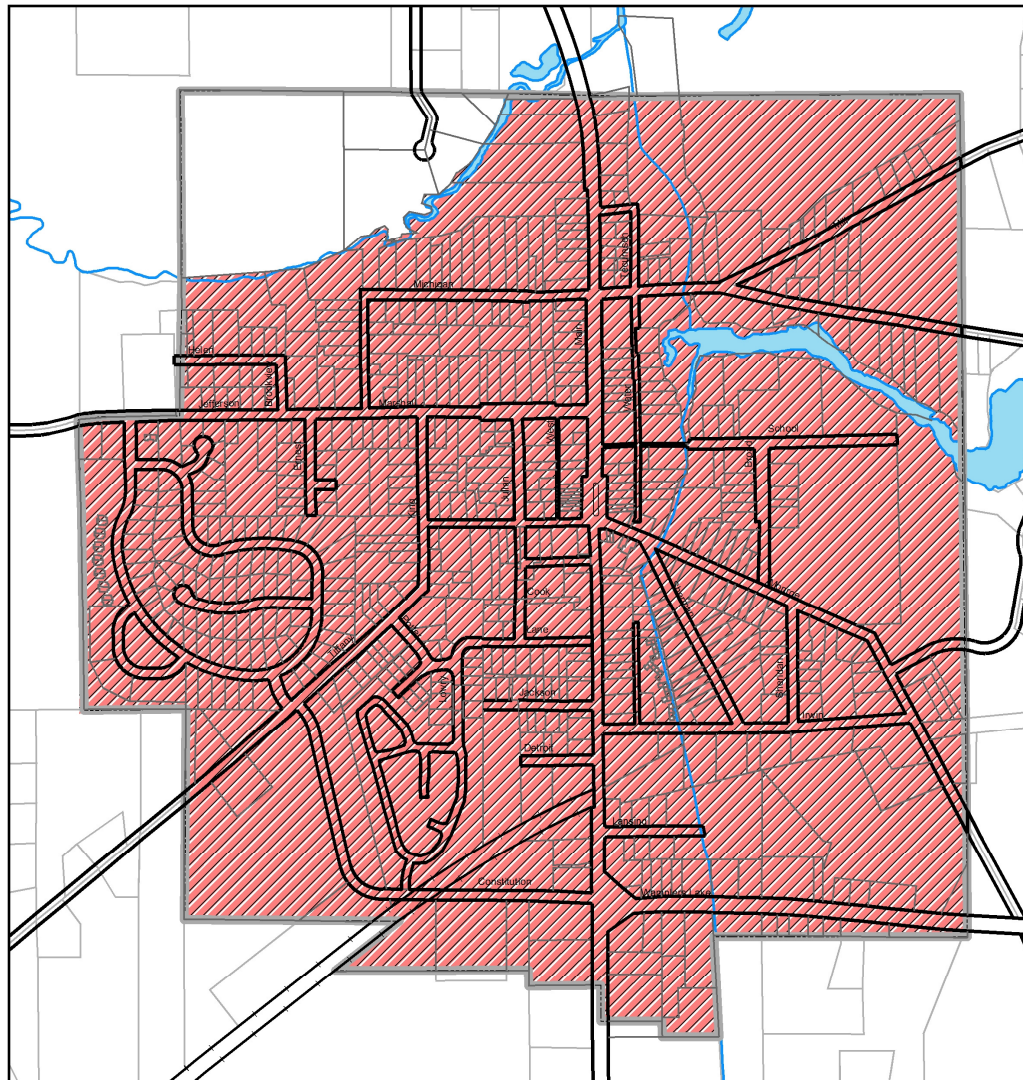


Water Service Area

Heart of the Irish Hills
VILLAGE OF BROOKLYN



8. Sewer Service Areas



 Village Service Area

Heart of the Irish Hills
VILLAGE OF BROOKLYN



Fire, Rescue, and Police Protection

Police and fire protection and rescue services are primarily provided by Columbia Township.

Fire and Rescue

The Village had its own fire department in the past. However, the Columbia Township Fire Department is currently the primary agency to provide fire and rescue services to Brooklyn. Village property owners pay property taxes to the Township, which covers part of the cost of the fire and rescue service. Brooklyn also provides additional funding to the Department through a cost-share formula with the Township.

A full-time fire chief coordinates paid fire fighters who are on call 24 hours a day. There are two fire stations:

- ✕ Station #1 is located at 8500 Jefferson Road (Township Offices) just west of the Village
- ✕ Station #2 is located at 195 Hyde Road on Clarklake

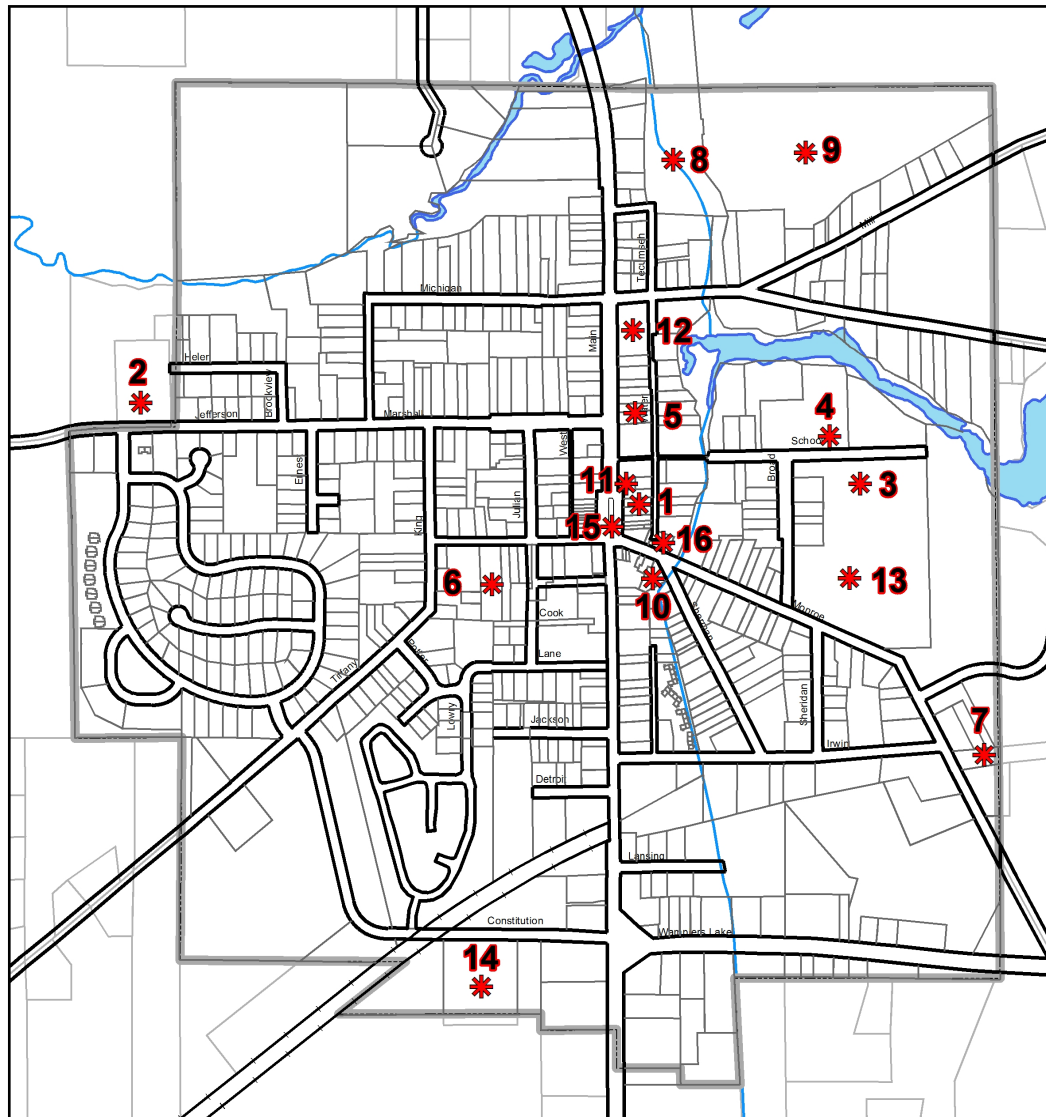
Station #1 serves Brooklyn (please see Map 9). All buildings in the Village are located within approximately 1.6 road miles of the station which was built in 1980.

Policing

The Village has operated its own police force in the past. However, the Columbia Township Police Department currently serves Brooklyn. Village property owners pay property taxes to the Township, which covers part of the cost for police protection. Brooklyn also provides additional funding to the Department through a cost-share formula with the Township.

The Village currently employs an ordinance enforcement officer and administers a municipal violations bureau for municipal code violations. Although authorized to do so, Township officers generally do not enforce the Municipal Code but provide assistance to the code enforcement official as needed.

Village officials have discussed the possibility of hiring a police officer or contracting for additional police services, but there are no immediate plans to do so. The Jackson County Sheriff's Department and the Michigan State Police also have law enforcement jurisdiction and provide police services within the Village.



9. Desti- nations

- 1 Brooklyn Village Office
- 2 Columbia Township Office
- 3 Columbia Middle School
- 4 Brooklyn Elementary School
- 5 Jackson District Library
- 6 American Legion Post
- 7 Brooklyn Sportsman Club
- 8 Swain Plank
- 9 Hill's Heart of the Lakes Golf Course
- 10 Masonic Temple
- 11 Chamber of Commerce Office
- 12 US Post Office
- 13 Columbia Athletic Field
- 14 Brooklyn Retirement Center
- 15 Village Square
- 16 Weatherwax Park

Heart of the Irish Hills
VILLAGE OF BROOKLYN



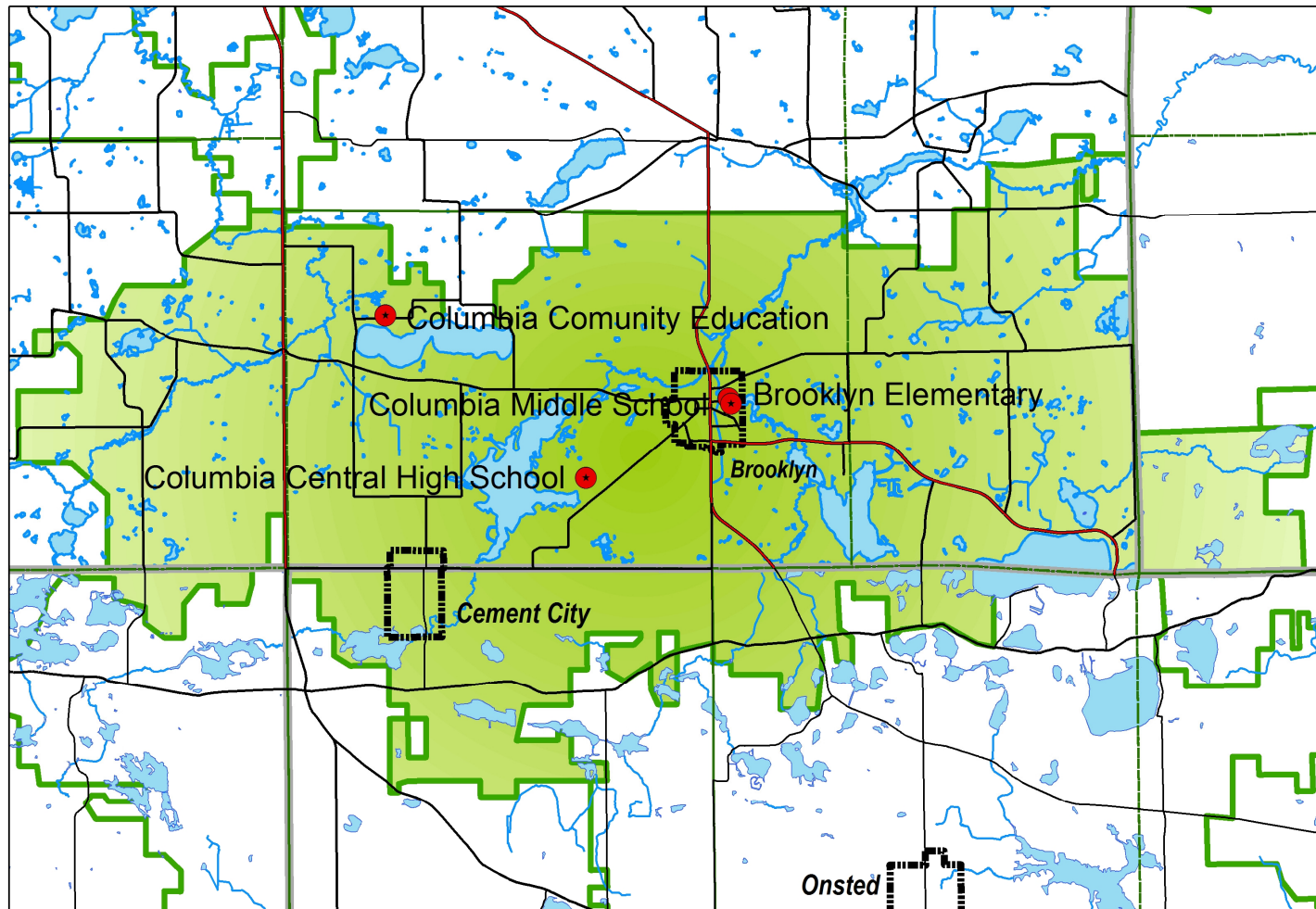
The forum for people accused of committing a criminal offense in the Village is the Jackson County Court System. Defendants requiring detention are housed in the Jackson County Jail. Prosecution of Municipal Code Violations is the responsibility of the Village. Any costs that arise from such prosecutions are also the responsibility of the Village. Any money collected from fines, costs, and judgments go into the general fund of the Village of Brooklyn.

Health Services

Basic medical, dental, optical and pharmaceutical services are available in the Village of Brooklyn as well as the surrounding area. Regional medical centers are located in nearby large cities such as Jackson (Allegiance Hospital) and Ann Arbor (University of Michigan & St. Joseph). A small hospital (Addison Community) is located in the Village of Addison.

Education

Brooklyn is served by the Columbia School District which encompasses parts of 4 counties with 2 villages and portions of 7 townships included in the boundaries (please see Map 10). Around 2,000 children are enrolled in one of the schools provided by the Class B school district. Students in kindergarten through 5th grade are enrolled in Brooklyn Elementary School while Columbia Middle School (located adjacent to the Elementary School) serves students enrolled in grades 6 through 8. Columbia Central High School (located between Brooklyn and Cement City) serves students enrolled in grades 9 through 12. Columbia Community Education provides infant care, organized youth sports and social enrichment programs (e.g., karate, social dance, and line dancing), an alternative or “options” high school, and adult education. There are no parochial or private schools in the area, although the 2010 Census revealed that less than 5% of school age children from the Village attend private schools. Post secondary educational opportunities are available through the Jackson Area Career Center and Jackson Community College, as well as a variety of nearby public and private 4-year colleges and universities.



10. Columbia School District



Recreation

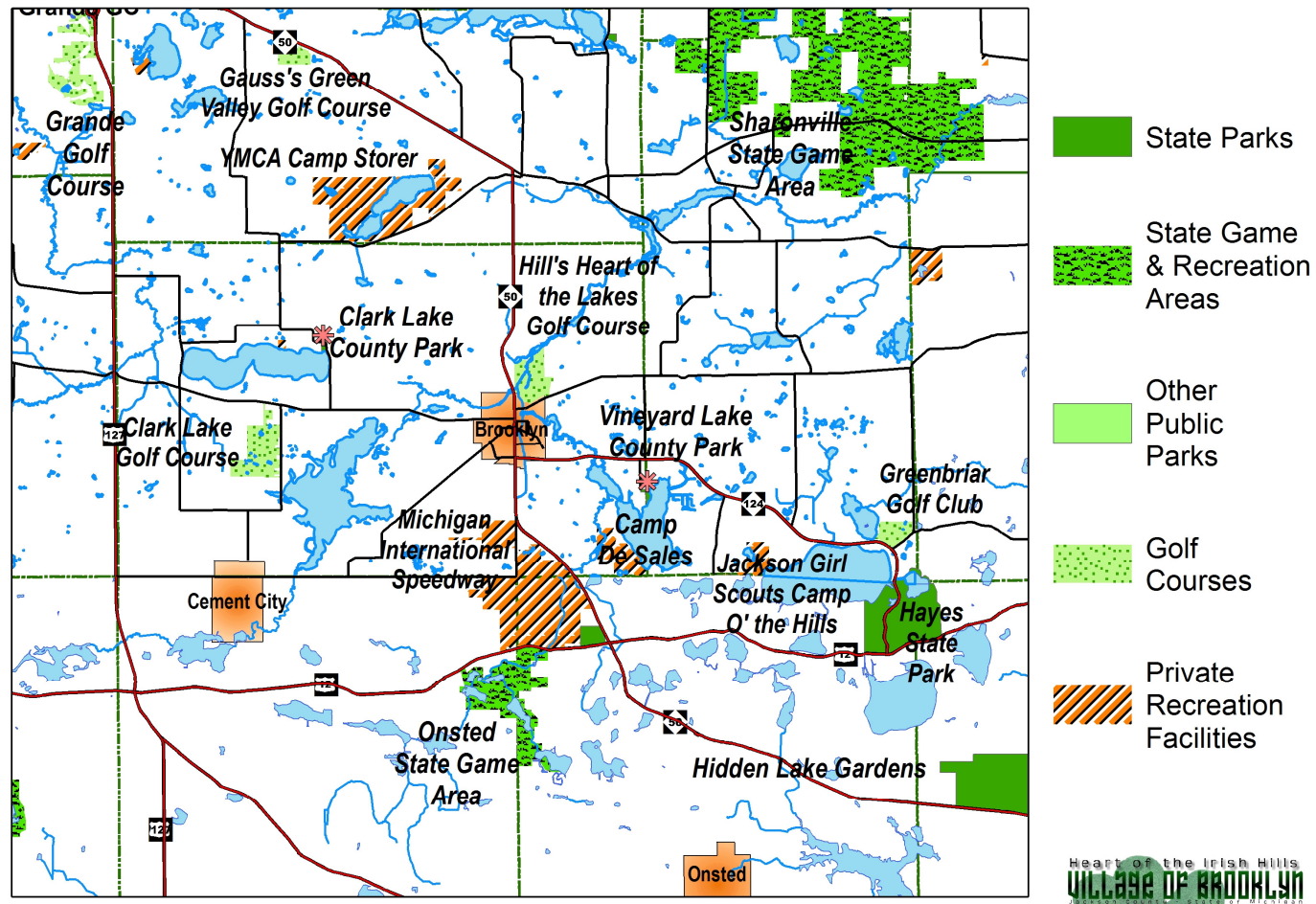
As our nation becomes more technologically advanced, the pace of living has increased with it. While we now have shorter working hours and higher family incomes, a price has been paid in the form of greater stress. Recreation is one important type of stress management that can be enjoyed by people of all ages.

Recreation may be either active or passive. Active recreation, for example, includes sports such as baseball, swimming, and skiing while passive recreation includes such activities as bingo, sitting on a park bench while enjoying a view, or taking a continuing education class. Age groups can sometimes be used to get an idea of the types of recreational requirements needed for a community. Toddlers, for example, need small tot lots scattered throughout the community because they cannot walk as far as their accompanying parents. A large elderly population may have greater needs for passive types of recreation. A variety of recreation opportunities should be available to all age groups.

Village Recreational Facilities

The Village currently provides 3 parks for its residents and visitors. The Village Square is in the heart of Downtown Brooklyn and is comprised of a gazebo, a state historic marker, a flagpole, and a mid-block crosswalk (please see Map 11). The 11 acres which comprise Swain Memorial Park are located along the banks of Goose Creek and host play equipment, basketball, picnicking, grills, and restrooms. There is a parking lot with a capacity of 40 vehicles. The less than an eighth of an acre Weatherwax Park, located at the base of the original water tower, is comprised of a newly constructed public restroom, several benches, and a grill. Within its proposed expansion area is planned a gazebo.

Also located in the Village are the grounds of Brooklyn Elementary School and Columbia Middle School (please see Map 10). The Columbia School District provides play equipment, a basketball court, baseball diamonds, a football stadium and track, tennis courts, a gym and restrooms on the 18 acres occupied by the schools.



11. Brooklyn Area Recreation Facilities

A couple of private recreation facilities are partially located in Brooklyn (please see Map 10). Hills Heart of the Lake Golf Course is adjacent to Swain Memorial Park along the northern border of the Village. The entrance to the grounds of the Brooklyn Sportsman Club is also located off of Monroe Street along the eastern border of Brooklyn.

Other Recreation Facilities

Brooklyn has a very good location relative to other nearby facilities (please see Map 11). Clark Lake County Park is located 4 miles to the west of the Village and Vineyard Lake County Park is located 2 miles to the southeast of Brooklyn. Both parks provide lake access for boating (boat launches), swimming (bath houses), fishing, and beach activities. The parks also provide playground equipment, picnicking facilities, drinking water facilities, and concession stands. The State of Michigan also provides a number of regionally significant recreation facilities within the vicinity of the Village: Hayes State Park, Onsted State Game Area, Sharonville State Game Area, and the Cambridge State Historic Park. Many golf courses and other private facilities (e.g., Michigan International Speedway and various summer camps) can also be found in the surrounding area.

Columbia School District also provides recreational facilities and programs (please see Map 10). Columbia Central High School, located near the eastern shore of Lake Columbia, hosts tennis courts, softball and baseball diamonds, a gymnasium, and a weight room. The grounds of Miller Elementary School, located in Cement City, includes play equipment, basketball and ball field. Columbia Community Education was established "to extend the benefits of the [school district's] educational program to all the citizens . . . who can benefit from continued exposure to academic, enrichment and recreational activities." This is accomplished by making available school facilities for continuing education as well as cultural, recreational, social and self-improvement programs. The program is provided from a facility near the north shore of Clark Lake.

Transportation

Transportation facilities in the Brooklyn Area are provided by a number of governmental agencies and private and quasi-public concerns.

Roads and Streets

The Michigan Department of Transportation (MDOT) owns and maintains the State's network of highways (i.e., M-routes, US-routes, and I-routes). The Village of Brooklyn owns and maintains all other public streets within the Village. The Jackson County Road Commission owns and maintains all other public roads in the surrounding area along with the townships they traverse.

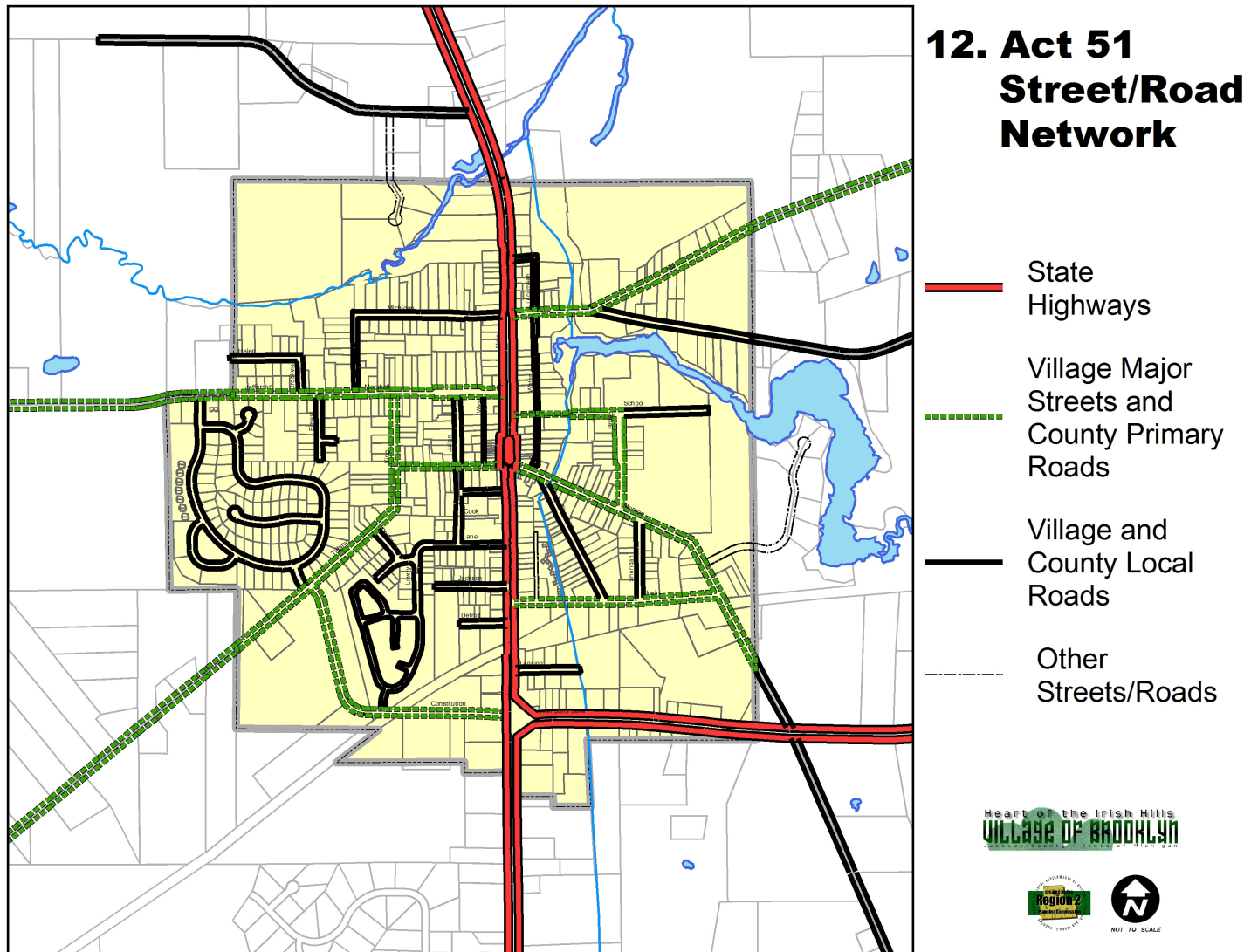
Act 51 is a classification system managed by MDOT that is useful for describing the street and road system in the Brooklyn Area (please see Map 12).

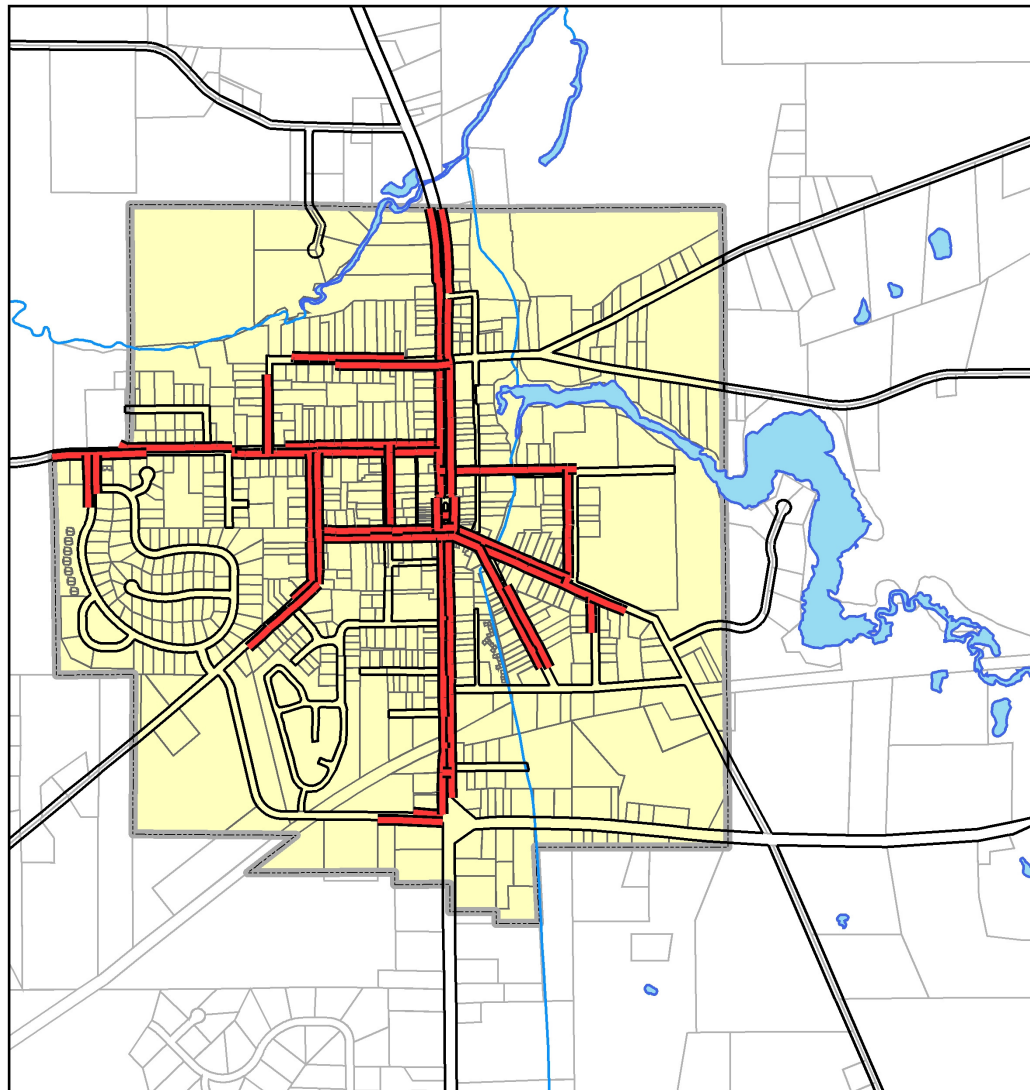
- ✦ **State Highways** provide Village residents easy access to nearby centers of employment, goods and services, and recreation and entertainment.
- ✦ **Major Streets** serve the Village by carrying traffic from the state highways to the smaller local streets. These streets often turn into county primary roads once they leave the Village.
- ✦ **Local Streets** provide direct access to predominantly residential areas.

Traffic Accidents are more likely to happen on the state highways and on major village streets, although they can also happen on local streets. An analysis of the accidents reported for the years 2009 through 2011 indicate that number of personal injury crashes have variety but remain fairly low, while property damage has increased. The majority of the crashes, specifically the more severe, have taken place on M-50. There have been no fatalities during that same time frame.

Sidewalks

The Village is served by an incomplete sidewalk network (please see Map 13). Many destinations within the Village can only be accessed by foot if the pedestrian is very determined and does not mind walking cross-country on in the street.





13. Existing Sidewalk Network

— Existing Sidewalks

Heart of the Irish Hills
VILLAGE OF BROOKLYN



Other Community Facilities

Other community services not previously mentioned are listed below:

Electric Service is supplied by the Consumers Energy Company.

Natural Gas Service is also supplied by the Consumers Energy Company.

Telephone Service is provided by *Frontier*. They currently offer high-speed internet access and satellite television in addition to local and long-distance telephone service.

Mail Service is provided by the United States Post Office, which maintains a local post office within the Village. The zip code for Brooklyn and the surrounding area is 49230.

Banking Services are provided by several institutions with branch offices and/or ATMs in the Village (e.g., Comerica, Onsted State, Flagstar, Bank of America, and Citizens, and America 1 and CP federal credit unions).

Trash Collection is currently provided by a number of private contractors.